



APTUS

FASTENER SYSTEMS



innovations in screws and fixings



APTUS

FASTENER SYSTEMS
innovation in screws and fixings

Aptus Fastener Systems Ltd present a comprehensive range of products and services, from everyday fixings to high specification structural fasteners.

Since our formation in 1992 Aptus has built around it's firm foundations to become one of the major UK importers serving a multitude of trades and market sectors with tailor made services and product support.



We intend to deliver an extraordinary level of service at every point of contact with the customer



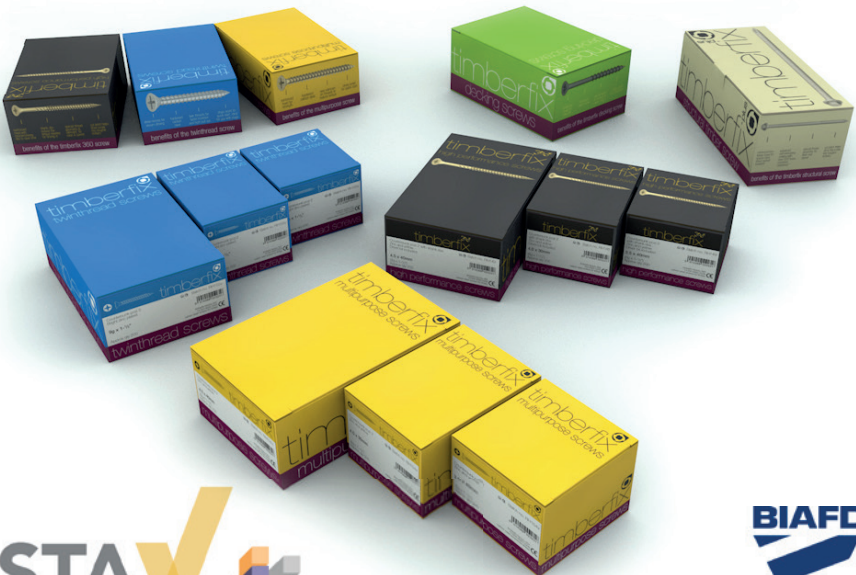
To treat our customers as individuals



Technical support from staff trained in specialist product application



Celebrating 30 years of service to our customers



timberfix 

trade

a range of everyday products, ideal for the tradesperson

4

timberfix ^{360°}

performance

professional quality high performance screws

5

timberfix 

outdoor

decking & landscaping

7

timberfix 

structural

structural timber screws, indoors & outdoors

8

pro-struct[®]

structural

our specialist range for structural use

9

ferrotek[®]

roofing & cladding

our range of self drilling screws for roofing & cladding

10

powerline[®]

drylining & fitout

products for drylining & light construction

15



high performance fully approved screws,
made in Germany

18

furniture
fixings

essential plastic parts & screw accessories for
furniture and shopfitting

32



a premium range of anchors,
resins & insulation fixings from Switzerland

40

woodscrews

twinthread



Product information

Countersunk pozi recess, hardened, bright zinc plated.

Special sizes and finishes available to order.
Rohs compliant available to order.



- Diameter: 4g ~ 12g
- Length: 1/2" ~ 4"
- Box qty: 100 ~ 200

multipurpose



Product information

Countersunk pozi recess, hardened, zinc with yellow passivation.

Special sizes and finishes available to order. Double countersunk for strength. Wax lubricated to aid insertion.



- Diameter: 3 ~ 6mm
- Length: 12 ~ 150mm
- Box qty: 100 ~ 200

multi material screws

countersunk pozi



Product information

The 'all-round' - performer. Countersunk pozi recess, hardened, ZYP. Reinforced head with ribs. Shank ribs to reduce drive torque. Innovative thread geometry ~ reduced splitting. Next Generation lubricant system.

Timberfix 360 countersunk pozi are also available in tubs and 'grab and go' cases.



- Diameter: 3.5 ~ 6.0mm
- Length: 15 ~ 200mm
- Box qty: 100 ~ 200
- Driver bit included
- CE marked to EN14592:2008+A1:2012

countersunk t-drive



Product information

The 'all-round' - performer. Countersunk t-drive recess, hardened, ZYP.

Reinforced head with ribs. Shank ribs to reduce drive torque. Innovative thread geometry ~ reduced splitting. Next Generation lubricant system.



- Diameter: 3.5 ~ 6.0mm
- Length: 15 ~ 180mm
- Box qty: 100 ~ 200
- Driver bit included
- CE marked to EN14592:2008+A1:2012

panel & distance screws

flange head panel screws



Product information

Wafer head performance screw for use in most materials and nylon plugs. Neat decorative finish, doesn't pull through the surface. Low profile head allows boards to fit neatly. More secure fix than countersunk. Driver bit included.

Ideal for securing sheet materials in joinery, carcass assembly and shop fitting applications.



- Diameter: 4mm, 4,5mm, 5mm
- Length: 25 ~ 60mm
- ROHS and REACH compliant
- Box qty: 500/ 200

adjustable distance screws



Product information

Adjustable screw for wooden substructures.

No predrilling required in most timbers. Through fixing, 19mm upper thread, lower thread

30mm/35mm/50mm. Zinc plated. Requires T-25 driver bit (available separately).



- Diameter: 6mm
- Length: 70 ~ 110mm
- Box qty: 500/ 200

decking & landscaping screws

decking screws - green



Product information

Countersunk pozi decking screw. High tech green corrosion resistant coating.

Self countersinking. Coarse thread gives faster drive time.



- Diameter: 4.5mm
- Length: 50 ~ 100mm
- Box qty: 100 ~ 200
- CE marked to EN14592:2008+A1:2012

landscaping screws - black



Product information

Hex drive structural timber screw. Black high tech coating. Up to 1000 hr salt spray resistance. No pre-drilling in most timbers.



- Diameter: 6.3mm
- Length: 65 ~ 250mm
- Box qty: 50

performance structural screws

hex head timberfix plus - brown



Product information

Hex drive structural timber screw. Brown high tech coating. Up to 1000 hr salt spray resistance. No pre-drilling in most timbers.

ACQ resistant coating. Type 17 point to reduce drive torque.



- Diameter: 6.3 ~ 6.5mm
- Length: 65 ~ 250mm
- Box qty: 50
- Hex socket driver bit in each box
- High quality boron steel
- CE marked to EN14592:2008+A1:2012

Endorsed by



specialist structural screws

flange head structural screw



Product information

Specialist steel manufacture allowing wood movement. Special thread geometry drives in quicker & gives better pull out resistance. Large diameter head improves resistance to head pull through.

Zinc plated 500hrs salt spray coating - service class 1 & 2 of Eurocode 5. T+ head marking & screw length on head. Driver bit in every box.



- Diameter: 6mm, 8mm
- Length: 60 ~ 300mm
- Box qty: 100 ~ 200
- *Diameters M6 – M14 available in lengths up to 1500mm & various head styles to special order.

brackets



Product information

Reinforced profile with ribs. ETA approved, CE marked

Manufactured in Europe within ISO9001. For use with screws or ring shank nails. Pre galvanised steel to EN 10346:2009 DX51D Z275*. Range expansion ongoing, please ask for samples. Declaration of performance available on request.

- Heights: 70, 90, 105mm

self drilling screws

hex head to cold rolled section 1.5 - 3.5mm



Product information

Hexagon washer flange with undercut.

No.3 self drilling point. Sheet to steel rails and purlins (cold rolled).



- 4.8 ~ 5.5 dia.
- Lengths 16 ~ 51mm
- 1000hr Ferroseal coating
- Bag qty: 100
- Available with or without 16mm EPDM washer

hex head to hot rolled section 4.0 - 12mm



Product information

Hexagon washer flange with undercut.

No.4 and No.5 self drilling point. Sheet to steel rails and purlins (hot rolled).



- 5.5 dia.
- Lengths 25 ~ 100mm
- 1000hr Ferroseal coating
- Bag qty: 50~100
- Available with or without 16mm EPDM washer

self drilling screws

hex head to timber



Product information

Hexagon washer flange with undercut.

Type 17 (gash) point.



- 6.3 x 25mm
- 6.3 x 32mm
- 6.3 x 45mm
- 1000hr Ferroseal coating
- Bag qty: 100
- 16mm EPDM washer

stitching screws



Product information

HS(G16) stitching screws (with 16mm galv. bonded washer).

A2 and A4 stainless bi-metallic stitching screws available with painted heads, over 200 Qualicoat certified RAL colours available to order.



- 6.3 x 22mm
- 1000hr Ferroseal coating
- Bag qty: 100

self drilling screws

countersunk timber to light section 1.5 - 3.5mm



Product information

Countersunk phillips recess.

No.3 self drilling point.



- 4.8 ~ 5.5 dia.
- Lengths 38 ~ 85mm
- 1000hr Ferroseal coating
- Bag qty: 100

countersunk timber to heavy section 4.0 - 12mm



Product information

Countersunk phillips recess.

No.4 and No.5 self drilling point.



- 5.5 dia.
- Lengths 65 ~ 109mm
- 1000hr Ferroseal coating
- Bag qty: 50~100

self drilling screws

panel screws



Product information

High thread, hexagon washer flange with undercut.

Composite panel to light, heavy section & timber available with 19mm EPDM washer.



- 5.6dia
- Length: 60 ~125mm (light section)
- 85 ~ 150mm (heavy section)
- 60 ~ 150mm (Type 17point)
- Bag qty: 25 ~ 50

agri screws



Product information

Suitable for use in sheds and barn roofs.

Available in 7 - 10 days.

- 5.5 x 75mm
- 16mm black EPDM washer
- 1000hr Ferroseal coating
- Bag qty: 100

miscellaneous

corrugated roofing



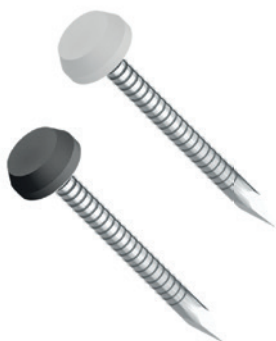
Product information

Fold over washers with pan head screws. Used to secure corrugated roofs to wooden structures.

Packed to suit your requirements.

- UV stabilized PVC
- Screws available in 40mm/60mm & 75mm long for different corrugation profiles
- CE marked to EN14592:2008+A1:2012
- Anti crush spacer available to order

roofing & cladding nails



Product information

Plastic headed nails for fascia boards. Available in white brown, black, anthracite grey. Stainless steel shank. Fine annular rings to maximise grip. Sharp point for easier wood penetration and large stepped metal head to resist impact damage. UV stable.

- Available 25mm, 30mm, 40mm, 50mm, and 65mm
- Packed in 100's and 250's

drywall screws

fine thread sharp point



Product information

Bugle head, Phillips Recess, Hardened, BZP finish available.

Ideal for securing boards to wood or steel studding up to 0.84mm thick.



- Diameter: 3.5 ~ 4.8mm
- Length: 25 ~ 125mm
- Box qty: 200 ~1000
- Outer qty: 2400~16000
- Free driver bit in each box
- CE marked to EN14566:2008+A1:2009

coarse thread sharp point



Product information

Bugle head, phillips recess, hardened, phosphate finish.

Ideal for securing boards to timber studding.



- Diameter: 3.5mm ~ 4.8mm
- Length: 25mm ~ 125mm
- Box qty: 200 ~1000
- Outer qty: 2400~16000
- Free driver bit in each box
- CE marked to EN14566:2008+A1:2009

drywall & frame screws

wafer head



Product information

Bugle head phillips recess, hardened, self drilling and sharp point available, BZP Finish.

A metal to metal fixing, ideal for constructing metal stud partitioning.



- Diameter: 4.2mm
- Length: 13 ~25mm
- Outer qty: 12000 ~ 16000
- Free driver bit in each box
- CE marked to EN14566:2008+A1:2009

concrete frame screws



Product information

CSK Head, T-30 Drive, Milled notches, Milled ribs. Needle point lead thread ZYP.

Medium duty, self tapping fixing suitable for the through fixing of wood, metal and PVCu frames to masonry.



- Diameter: 7.5mm
- Length: 42 ~ 182mm
- Box qty: 100
- Outer qty: 400 ~ 1800
- M6 ~ M6.5 hole required depending on substrate density
- Longer length available within Mungo range

window installation screws

baypole screws



Product information

Flange head self drilling screws for securing Upvc units together. BZP, phillips recess.



- Diameter: 4.8mm
- Length: 50 ~ 90mm
- Box qty: 100 ~ 200
- 100mm coming soon

transom screws



Product information

Shallow countersunk head with phillips recess.

- Diameter: 4.8mm
- Length: 50 ~ 95mm
- 240 hours salt spray resistance

heco topix plus

countersunk pozi



Product information

High performance multi material screws, self countersinking, unique magic close thread.

Perfect pitch geometry.

Reduces splitting, smaller grouping and edge distances.



- Can be used in timber,
- PVCu, masonry, aerated
- block & up to 2mm steel.
- No pre-drilling in most materials.
- Diameter: 2.5 ~ 6.0 mm
- Length: 10 ~ 200 mm
- Zinc and yellow and BZP

countersunk t-drive



Product information

High performance multi material screws, self countersinking, grip fit recess, unique magic close thread.

Perfect pitch geometry. Best performance with Heco-drive HD bits.

Reduces splitting, smaller grouping and edge distances.



- Diameter: 3.0 ~ 10.0 mm
- Length: 12 ~ 500 mm
- Zinc and yellow and BZP
- Packing: 200 ~ 1000

heco topix plus

flange head & backwall screws



Product information

High performance multi material screws, grip fit recess, unique magic close thread.

Perfect pitch geometry. best performance with Heco-drive HD bits.

Reduces splitting, smaller grouping and edge distances.



- Diameter: 3.0 ~ 10mm
- Length: 20 ~ 500mm
- BZP coating, ROHS compliant

pan head



Product information

High performance multi material screws, grip fit recess, unique magic close thread.

Perfect pitch geometry.

Reduces splitting, smaller grouping and edge distances.



- Diameter: 3.0 ~ 6mm
- Length: 12 ~ 80mm
- BZP coating, ROHS compliant

heco topix plus

hex combination



Product information

High performance multi material screws, grip fit recess.

Perfect pitch geometry. Reduces splitting, smaller grouping and edge distances.



- Diameter: 8.0 ~ 10mm
- Length: 50 ~ 140mm
- Bright zinc plated

drilled head



Product information

High performance multi material screws, unique magic close thread.

Perfect pitch geometry. Reduces splitting, smaller. Drilled hole for secure caps, available separately. Smaller grouping and edge distances.



- Diameter: 4.0 ~ 5.0
- Length: 25 ~ 80mm
- BZP ROHS complaint
- 2.4mm bore hole pozi #2

specialist structural

cylinder head - full thread



Product information

High performance multi material screws, unique magic close thread. Perfect pitch geometry.

Reduces splitting, smaller drilled hole for secure caps, available separately. Smaller grouping and edge distances.



- Full thread
- Diameter: 6.0, 8.0 & 10.0mm
- Length: 120 ~ 380mm
- Ideal for renovation work
- Calculation software available

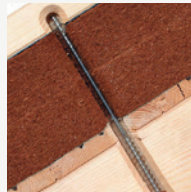
therm - insulation support screws



Product information

High performance multi material screws, unique magic close thread. Perfect pitch geometry.

Reduces splitting. Smaller grouping and edge distances.



- Diameter: 8.0 & 10mm
- Length: 160 ~ 600mm
- For use with soft insulation systems

heco topix stainless steel

countersunk - pozi & t-drive



Product information

High performance multi material screws, stainless steel, self countersinking, grip fit recess, unique magic close thread.

Perfect pitch geometry.

Reduces splitting, smaller grouping and edge distances.



- Can be used in timber,
- PVCu, masonry, aerated
- block & up to 2mm steel.
- No pre-drilling in most materials.
- Diameter: 3.0 ~ 8.0mm
- Length: 20 ~ 400mm
- Stainless steel

flange head t-drive



Product information

High performance multi material screws, grip fit recess, unique magic close thread.

Perfect pitch geometry. Best performance with Heco-drive HD bits.

Reduces splitting, smaller grouping and edge distances.



- Diameter: 6.0 ~ 8.0mm
- Length: 40 ~ 400mm (XL)
- Stainless steel

heco topix stainless steel

Pan head, pozi & t-drive



Product information

High performance multi material screws, grip fit recess, unique magic close thread.

Perfect pitch geometry.

Reduces splitting, smaller grouping and edge distances.



- Diameter: 3.0 ~ 5.0mm
- Length: 20 ~ 50mm
- A2 stainless

raised countersunk



Product information

High performance multi material screws, grip fit recess, unique magic close thread.

Perfect pitch geometry.

Reduces splitting, smaller grouping and edge distances.



- A2 stainless
- Diameter: 3.5 ~ 5.0mm
- Length: 20 ~ 60mm

stainless decking screws

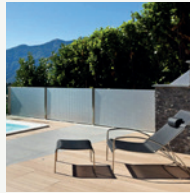
raised countersunk double thread



Product information

High performance multi material screws, unique magic close thread.

Perfect pitch geometry. Reduces splitting, smaller grouping and edge distances.



- A2 and A4 stainless
- Diameter: 5.0mm
- Length: 40 ~ 80mm

countersunk



Product information

High performance multi material screws, unique magic close thread.

Perfect pitch geometry. Reduces splitting, smaller grouping and edge distances.



- A2 and A4 stainless
- Diameter: 5.0mm
- Length: 40 ~ 80mm

cladding & flooring screws

cladding screws



Product information

High performance multi material screws, self countersinking, grip fit recess, unique magic close thread.

Perfect pitch geometry.

Reduces splitting, smaller grouping and edge distances.



- A2 stainless
- Diameter: 4.5 & 5.0mm
- Length: 50 ~ 80mm

tongue & groove flooring screws

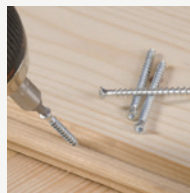


Product information

High performance multi material screws, self countersinking, grip fit recess, unique magic close thread.

Perfect pitch geometry.

Reduces splitting, smaller grouping and edge distances.



- Hardened steel & A2 stainless
- Diameter: 3.5 ~ 4.5mm
- Length: 40 ~ 80mm

multi monti plus - screw anchor

hex



Product information

The first screw anchor with ETA option 1 approval. Stress free installation in brick, masonry, stone and block. Close to edge & close grouped installation possible.

Reusable, ideal for maintenance situations. Through fixing saves time and money. C1 seismic and F120 fire rated.



- 6.0mm (5mm drill)
- 7.5mm (6mm drill)
- 10mm (8mm drill)
- 12mm (10mm drill)
- Length: 50 ~ 200mm
- Box qty: 25 ~ 100's
- Bright zinc plated
- CE marked in accordance with ETA15/0784

hex washer



Product information

The first screw anchor with ETA option 1 approval. Stress free installation in brick, masonry, stone and block. Close to edge & close grouped installation possible.

Reusable, ideal for maintenance situations. Through fixing saves time and money.



- 16mm (14mm drill)
- 20mm (18mm drill)
- Length: 120 ~ 200mm
- Box qty: 25 ~ 100's
- Bright zinc plated
- CE marked in accordance with ETA15/0784

multi monti plus - screw anchor

countersunk



Product information

The first screw anchor with ETA option 1 approval. Stress free installation in brick, masonry, stone and block. Close to edge & close grouped installation.

C1 seismic and F120 fire rated.



- 5.0mm (4mm drill)
- 6.0mm (5mm drill)
- 7.5mm (6mm drill)
- 10mm (8mm drill)
- 12mm (10mm drill)
- Length: 30 ~ 160mm
- Bright zinc plated
- Box qty: 50 ~ 200

pan head



Product information

The first screw anchor with ETA option 1 approval. Stress free installation in brick, stone and block. Close to edge & close grouped installation.

C1 seismic and F120 fire rated.



- 5.0mm (4mm drill)
- 6.0mm (5mm drill)
- 7.5 mm (6mm drill)
- 10mm (8mm drill)
- Length: 30 ~ 70mm
- Bright zinc plated
- Box qty: 50 ~ 200

multi monti plus - screw anchor

metric stud



Product information

Screw in anchor with metric stud. BZP.

ETA15/0784 - Please refer to price list/technical manual for applicable sizes. For use with fixings with internal metric thread.



- 6.0mm (5mm drill)
- 7.5mm (6mm drill)
- 10mm (8mm drill)
- Length: 55 ~ 120mm
- German F120 fire rated
- C1 Seismic rated
- Sprinkler rated
- CE marked in accordance with ETA15/0784

MMSI coupler



Product information

Type MMSI – with female metric thread . Screw in anchor with internal metric thread. BZP. For use with threaded rod. ETA15/0784 - Please refer to price list/technical manual for applicable sizes.



- 7.5 x 60, 10.0 x 80 with internal combi thread M8/ M10
- 10.0 x 80 with M10 internal
- 6.0mm (5mm drill)
- 7.5 mm (6mm drill)
- 10mm (8mm drill)
- Length: 40 ~ 75mm
- German F120 fire rated
- C1 Seismic rated
- Sprinkler rated
- CE marked in accordance with ETA15/0784

multi mont plus - screw anchor

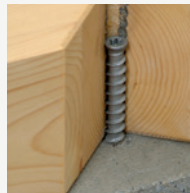
timber connect sole plate anchor



Product information

The perfect combination of screw anchor and wood screw. Ideal for securing wood components to solid masonry and concrete. Transmission of high tensile and shear forces without any additional construction measures.

Can be countersunk, so a single length covers a large number of timber thicknesses. Ideal for sole plates.

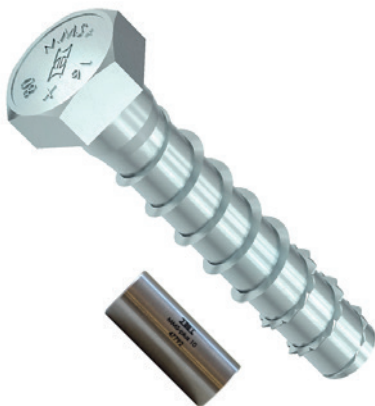


Sizes in the range of:

- 7.5 x 100mm
- 10 x 130mm
- 12 x 160mm

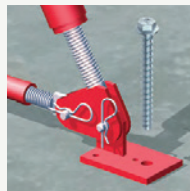
- setting tool available separately

SSK - reusable anchor for props



Product information

Temporary fastenings of site equipment for example props, push-pull props, guardrails or scaffolding. Disassembling and reusability is permitted when using checking gauge. Approved for the use in young concrete with a compression strength of at least $f_{c,cube} > 10 \text{ N/mm}^2$. Clearance hole diameters from 17 – 23 mm in bracings can be covered with one screw. Settings can be carried out with machines as no defined installation torque is required.



- No plugs required, taps directly into substrate
- No expansion pressure
- Diameter: M16 (M14 drill)
- Length: 130mm

multi monti plus - screw anchor stainless steel

hex



Product information

The first stainless steel screw anchor with ETA option 1 approval.

Ideal for use in extreme environments. Reusable, ideal for maintenance situations. Bi-metal design for reliability. Please refer to price list / technical manual for applicable sizes.



- 7.5 mm (6mm drill)
- 10mm (8mm drill)
- 12mm (10mm drill)
- Length: 40 ~ 135mm
- German F120 fire rated
- Sprinkler rated
- A4 stainless steel
- 1.4529 HCR on application

countersunk



Product information

The first stainless steel screw anchor with ETA option 1 approval. Ideal for use in extreme environments. Reusable, ideal for maintenance situations.

Bi-metal design for reliability. Please refer to price list / technical manual for applicable sizes.



- 7.5 mm (6mm drill)
- 10mm (8mm drill)
- 12mm (10mm drill)
- Length: 40 ~ 130mm
- Sprinkler rated
- German F120 fire rated

multi monti plus - screw anchor

pan head



Product information

The first stainless steel screw anchor with ETA option 1 approval.

Ideal for use in extreme environments. Reusable, ideal for maintenance situations. Bi-metal design for reliability. Please refer to price list / technical manual for applicable sizes.



- 7.5mm (6mm drill)
- Length: 40 ~ 115mm
- German F120 fire rated
- Sprinkler rated
- A4 stainless steel
- 1.4529 HCR on application



plastic wall plugs

red



Product information

Lightweight multipurpose PE plug.
Screw sizes 8g ~ 10g, drill diameter 7.0 mm.

See Mungo for high performance approved nylon plugs.



- boxes of 100
- sleeves of 1000
- cartons of 10,000
- yellow and blue plugs also available

brown



Product information

Lightweight multipurpose PE plug.
Screw sizes 8g ~ 10g, drill diameter 7.0 mm.

See Mungo for high performance approved nylon plugs.



- boxes of 100
- sleeves of 1000
- cartons of 10,000

we've got screws covered!

push on cover caps



Product information

Decorative cap system. Suitable for Pozzi #2 recess. Large colour range available, see appendix. Packed to order.

fold over cover caps - small



Product information

Decorative cap system. Suitable for countersunk screw diameters 6g (3.5mm) and 8g (4.0mm). Large colour range available, see appendix. Packed to order.

we've got screws covered!

fold over cover caps - large



Product information

Decorative cap system. Suitable for countersunk screw diameters 10g (5mm) and 12g (6.0mm). Large colour range available, see appendix. Packed to order.

two part plastic domed cap



Product information

Decorative cap system. Secure snap fit for 6g & 8g screws. Available in white, black, anthracite grey and metallic chrome.

Any other RAL colour subject to lead time and MOQ.

- Coming soon: large low profile cap for 5.0 mm / 10g screws

screw essentials

solid brass screw cup washers



Product information

Solid brass surface screw cup washers, natural finish.
Suitable for 6g & 8g screws. Packed to order.

plated steel screw cup washers



Product information

Steel screw cup washers. Plated nickel or electrobrass
available in 6g , 8g , 10g & 12g. Packed to order, suitable
for indoor/ dry conditions.

furniture fixings

modesty blocks



Product information

Made from durable polyamide.

Available in various colours.

3 part KD block or single part modesty block.

joint connector bolts



Product information

BZP, 15mm flat head. M4 Allen key drive.

Used for cabinets, chairs, desks, shop fittings and tables.

Suitable for use with joint connector nuts, cross dowels,
tee nuts and insert nuts.

- Joint connector bolts
- M6 x 10 ~ M6 x 115mm
- Pack qty: 50
- Also available in bulk
- Other sizes and finishes available to order

furniture fixings

joint connector nuts



Product information

Joint connector nuts , ideal for use with our JC bolts.

- 15mm flat head
- Bright zinc plated
- M4 hex recess
- M6 x 12 & M6 x 17 available
- packed to order

insert nuts and cross dowels



Product information

Cross Dowels: slotted, BZP.

- M6 x 14 ~ M6 x 25
- Pack qty: 50

Cross dowels used in conjunction with joint connector bolts provides a tight, heavy duty joint. Typically used in cabinets, chairs, desks and tables.

Insert nuts: Types D & E, ZYP.

- Type D M6 x 13, M6 x 20
- Type E M6 x 13, M6 x 20
- Pack qty: 50

Audio equipment, cabinets, chairs, desks and shop fittings. Used where a strong permanent thread for wood and wood based sheet materials is required.

furniture fixings

inter screws



Product information

Two part inter screw. Joins board or carcass units together. For use with 28mm – 42mm material.

- Male and female parts screw together to give strong tight fixing
- M4 Steel, BZP
- M6 Plastic, White
- Pack qty: 10

confirmat & carcass screws



Product information

Bright zinc plated. Pozi 3 recess.
Allen key drive available to order subject to lead time and MOQ. Assembly of carcasses and furniture butt joints.

- M7 x 50
- Pack qty: 100

furniture fixings

cams & dowels



Product information

BZP Assembly components. Concealed fixing. For fixing panels and frames in furniture assembly.

- Cam Dowel 24mm, 34mm
- Cam Lock 15mm, 18mm
- Pack qty: 50

wedges



Product information

Brown plastic wedge strip. To compensate for uneven surfaces and floors ensuring furniture and kitchen units are level.

- 1mm – 8mm
- Breaks off easily at 8 different thicknesses
- Pack qty: 50



mungo quality anchors

a premium range of anchors,
resins & insulation fixings from Switzerland

metal anchors

through bolts M2



Product information

M1t ETA Option 7. Railings, steel constructions, machines, facade substructures, high-racks, cable trays.

Special design of the clip in stainless steel gives a guaranteed hold. Torque controlled expansion.



- Zinc plated > 5 microns
- M6 - M20
- Pre installation or through fixing
- ETA Option 1 available
- European Technical Approval
- Hardened steel, Greentec coated and A4 stainless available

express nails MEN



Product information

MEN Express Nail. Secures timbers, substructures, profiles. Economical installation, no screw and plug required.

Through fixing with the metal disc, the MEN is appropriate overhead installation of insulation.



- Zinc plated > 5 microns
- Through fixing
- Indoor applications



metal anchors

MAN ceiling anchor, ETA part 6



Product information

Approved for multiple fixings of light weight suspended ceilings to DIN18168. Also in cracked concrete.

F120 fire rated.



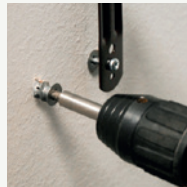
- European Technical Assessment Part 6
- Top load values
- Zinc plated > 5µm / Stainless steel A4/316
- Through fixing
- Indoor (zinc plated) & outdoor (stainless steel) applications

MJP jet plug - plasterboard fixing



Product information

One of the first plasterboard fixings in the trade and still one of the most popular fixings for hollow walls.



- 25mm, 32mm, 39mm available
- Nylon version available
- Pre installation
- Indoor applications



mungo quality anchors

a premium range of anchors,
resins & insulation fixings from Switzerland

chemical anchors

MIT SP polyester mortar, styrene free



Product information

European Technical Assessment according to ETAG Q29 for use in masonry. European Technical Assessment Option 7 for non-cracked concrete with anchor rod and with rebar used as anchor. VOC free according to Swiss legislation and certified A+ according to DEVL 1101903D / DEVL 1104875A LEED - Test Report. Suitable for assemblies in perforated brick with sleeve.



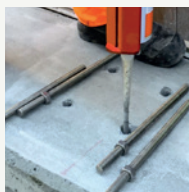
Medium duty fastening, fast curing, variable setting depth in concrete. Dry, wet and water-filled drill holes. Styrene free and low odour. Colour of mortar: grey. Indoor (zinc plated) and outdoor (stainless steel) application.

MIT-hybrid plus



Product information

Automatic hole cleaning with the innovative 2in1 hollow drill bit. European Technical Assessment Option 1 for cracked and non-cracked concrete with anchor rod and with rebar used as anchor. European Technical Assessment for post-installed rebar connections. Assessment of resistance under fire exposure F30-F120. Assessment of resistance under fire exposure (Rebar).



Anchor may also be used under seismic influence for performance category C1 + C2 (Option 1). VOC free according to Swiss legislation and certified A+ according to DEVL 1101903D / DEVL 1104875A. LEED - Test Report. Highest productivity. Certification for drinking water systems.



mungo quality anchors

a premium range of anchors,
resins & insulation fixings from Switzerland

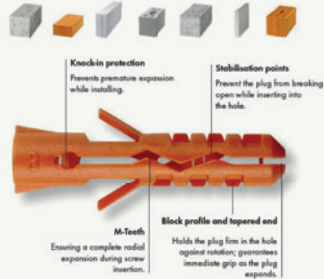
nylon anchors

MN



Product information

MN Nylon Plug. For use in solid building materials including block, brick & masonry. Knock-in protection preventing premature expansion whilst installing. Stabilising points to prevent the plug from breaking. Block profile and tapered end to hold the plug firm. M-teeth to ensure a complete radial expansion during insertion.

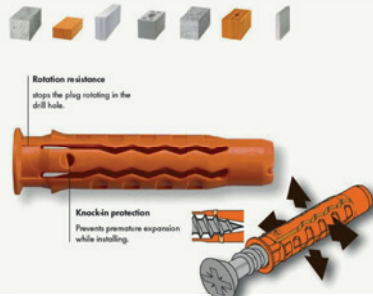


MQ



Product information

MQ Quattro® Nylon Plug. Holders, electric switches, pictures, lamps, profiles, substructures, rails. Rotation resistance to prevent the plug rotating in the hole. Knock-in protection preventing premature expansion whilst installing. Can be used with wood screws, chipboard screws and metric screws.



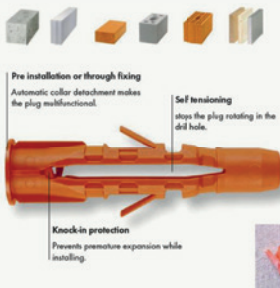
nylon anchors

MU



Product information

MU nylon plug. For use in perforated brick, plasterboard, chipboard, calcium silicate brick. Rotation resistance to prevent the plug rotating in the hole. Knock-in protection preventing premature expansion whilst installing. Can be used with wood screws, chipboard screws and metric screws.

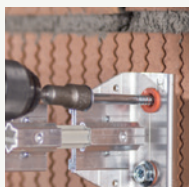


MQL



Product information

MQL Universal Nylon Frame Plug. For facade and roof substructures, ventilated facades, fixing for insulation, substructures. ETAG 020 - Approved for multiple use in concrete and masonry for non-structural applications. Fire resistance test certification F90. Universal mounting featuring longer plugs with reinforced shank. Knotting of the material gives a positive connection in the hollow space.



- Increased load capacity due to 4 expansion zones
- Setting depth of 70mm will result in higher loadings
- Made from high quality polyamide PA6
- Through fixing
- ETAG 020 – M10 only



mungo quality anchors

a premium range of anchors,
resins & insulation fixings from Switzerland

nylon anchors

MGD scaffold anchors



Product information

MGD Scaffold plug. For use in Concrete C20/25, Compressive strength 25 N/mm². For use in brick, calcium silicate brick, perforated brick, natural stone, rock. Economical solution for light scaffolds, climbing scaffolds, tension ropes. Setting depth mark for correct installation. Easy installation due to knock-in protection and plug collar. End Cap for clean closure after dismantling. Plug made from high-quality polyamide PA6. Temporary outdoor applications.



Prepacks available



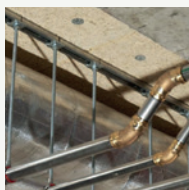
insulation anchors

MIDS



Product information

MIDS Insulation Nail. Fire resistance test cert. F120. For use in concrete C20/25. Compressive strength 25 N/mm². For use in lightweight concrete, brick, calcium silicate brick, calcium silicate brick, perforated brick. Cap reduces cooling/warming transmission. In combination with MDB discs for soft insulating material. Stainless steel available. Through fixing.



- Please refer to Mungo product guide for specific application data. This is available on request
- In combination with MDB discs for soft insulating material
- Stainless steel for outdoor applications
- Suitable for overhead fixings
- Through fixing

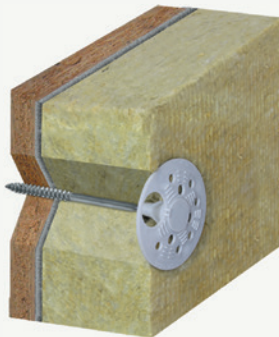
approved insulation systems



Product information

Approved for ETICS applications with nylon and metal pins.

support washers suitable for wood, concrete and steel using the appropriate screws.



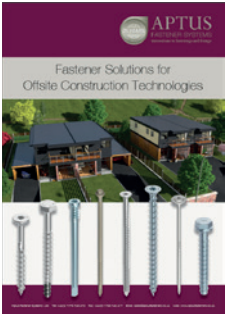
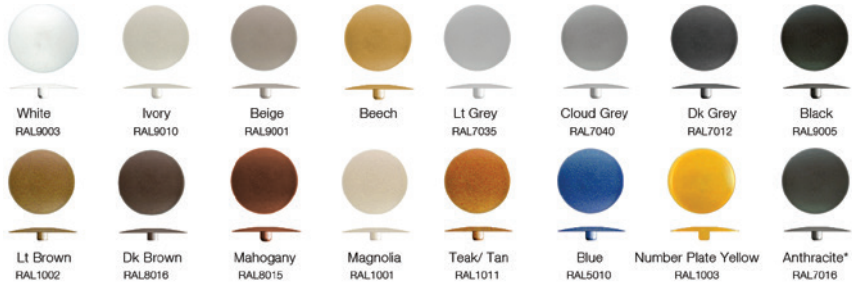
Please use appropriate protective equipment when using these products. Loading guidelines vary depending on substrate type and consistency. Please ensure that the site is surveyed correctly before selecting a particular product for a specific application.

Disclaimer : Aptus Fasteners make every effort to ensure that information contained within this product guide is accurate. However, because of the multitude of variables on site and with application conditions we take no responsibility for misselection of products. We would strongly advise involvement of a qualified engineer at the earliest possible stage and will of course assist in this process in any way we can. Please advise us of any inaccuracies in this guide so that we can correct for future editions.

gauge		length	
imperial	metric	imperial	metric
2g	2mm	1/4	6mm
3g	2.5mm	3/8	10mm
4g	3mm	1/2	12mm
5g	3mm	5/8	16mm
6g	3.5mm	3/4	20mm
7g	4mm	7/8	22mm
8g	4mm	1	25mm
10g	5mm	1 1/4	30mm
12g	5.5mm	1 1/2	40mm
14g	6mm	1 3/4	45mm
		2	50mm
		2 1/4	55mm
		2 1/2	60mm
		2 3/4	70mm
		3	75mm
		3 1/2	90mm
		4	100mm

colour guide for plastic parts:

Colours are for representative purposes only within limits of printing, please request samples if required. RAL references are closest match. Other colours also available subject to lead time and MOQ. * plastic domed caps and polytop nails only.



Aptus Fasteners have developed the most comprehensive range of innovative fastening solutions for modern methods of offsite construction.

Please contact our sales team if you require a copy of this brochure or download it from the downloads section of our website:

www.aptusfasteners.co.uk



APTUS

FASTENER SYSTEMS
innovation in screws and fixings

edition (5)

aptus: appropriate, connected, fastened, fastened/prepared, fitted, fitted out, fitting, prepared, suitable

joinery & timber

structural timber &
offsite

outdoor & decking

steel & concrete



shop fitting &
furniture connectors

drywall & fitout

roofing, cladding &
insulation



UK Partner of:



Aptus Fastener Systems Ltd

Salterwood Drive, Denby Hall Business Park, Denby, Derbyshire, DE5 8JY UK

Tel: +44 (0) 1773 740 410 Fax: +44 (0) 1773 740 417

Email: sales@aptusfasteners.co.uk www.aptusfasteners.co.uk